

## **ULTRA BRITE** Concentrated Car Wash

### Description :

Concentrated automotive and truck soap dissolves instantly in hot or cold water. This neutral pH formula contains no aggressive surfactants and will not remove long-lasting waxes, even after many washes, but will dislodge contaminants and dirt from the road without difficulty.

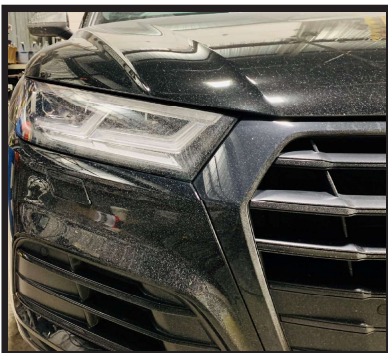
This concentrated soap is excellent for all types of businesses such as car wash, mechanic's garage, bodybuilder, new car dealers or used and daily consumer. It can be used for the wash by hand or with a pressure system. Easy to use; wash, rinse and let dry; no need to wipe.

### Advantages :

- Highly concentrated product.
- Foaming action dislodges the most stubborn dirt.
- Does not leave traces and rinses easily.
- Biodegradable, neutral pH gentle on the hands.

### Instructions :

- Rinse the vehicle with clean water to remove surface dirt and dust.
- For normal use, add 50ml of concentrated soap to 4 liters of lukewarm water. For heavily soiled vehicles, 100ml for 4 liters of lukewarm water. Shake well and froth.
- Always start by washing the vehicle from the top and finish from the bottom. Use a mitt or sponge soaking in the preparation. Rinse with water after washing each section of the vehicle. Don't let the soap dry on the vehicle.
- Rinse the vehicle completely and allow it to air dry. If the water is hard, it will leave lime marks indrying, in this case wipe with a chamois.



n° 801-032 6 X 1lt Box / n° 802-01 4 X 3.78lt Box / n° 803-05 18.9lt Pail / n° 805-55 208lt Barrel